

## I. Overview

This document is a guide to preparing a computer running Microsoft Windows XP to perform the initial set-up of SurgeX iControl products. The setup steps are similar for Microsoft Windows versions 2000, Vista, and 7.

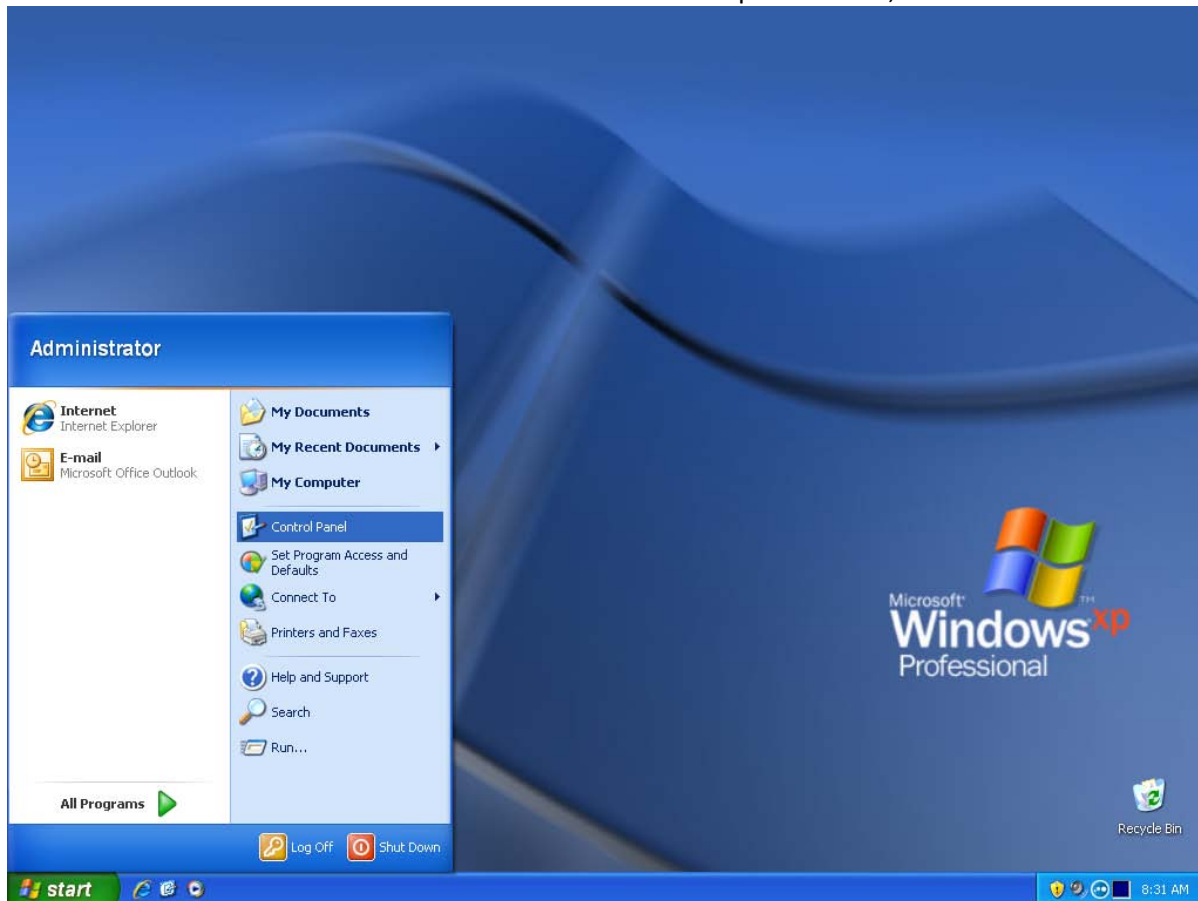
## II. Preparation

The following items will be required:

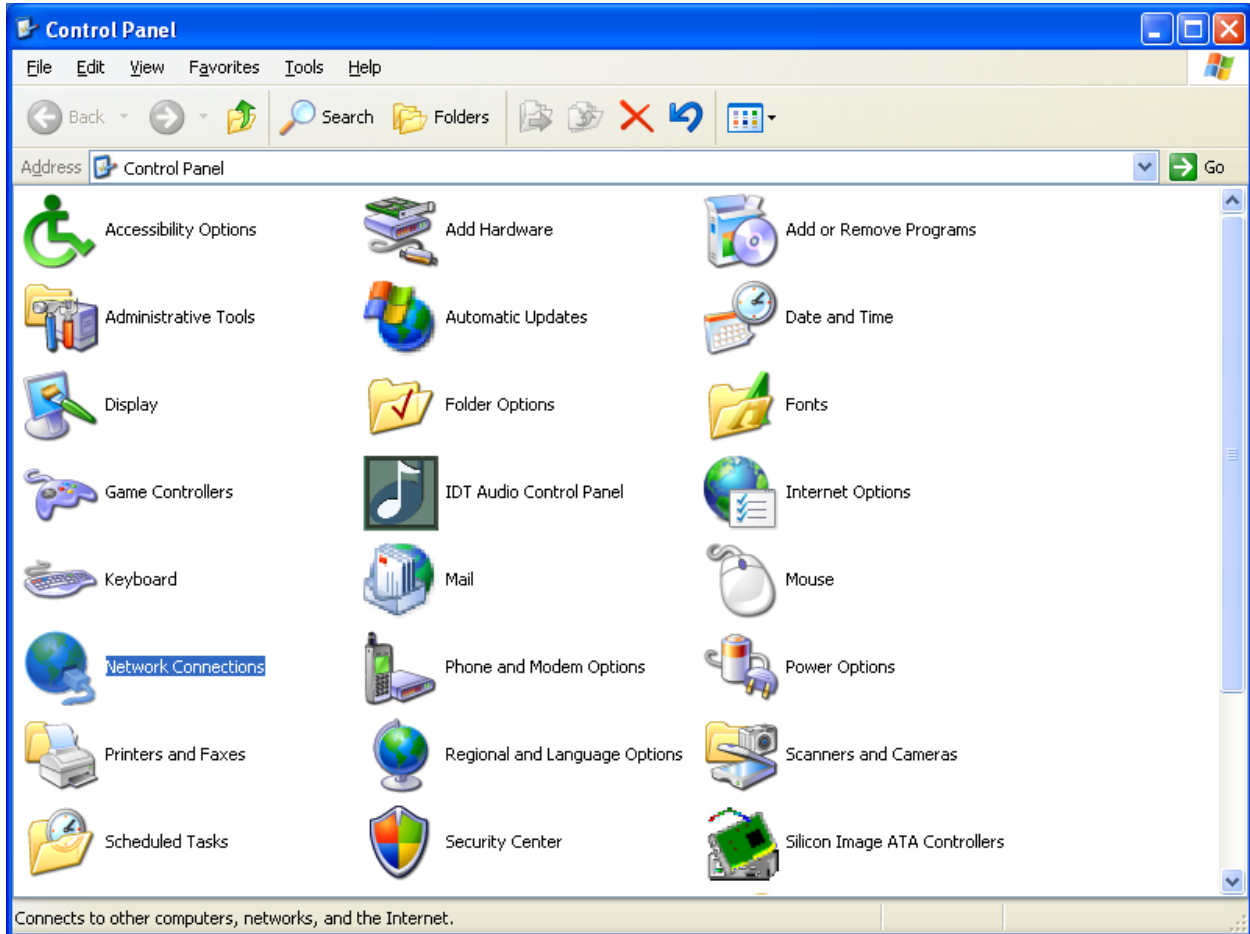
- SurgeX iControl product
- Computer running Microsoft Windows XP
- Network crossover cable (supplied with iControl product)
- Standard network cable (supplied with iControl product)
- Pencil and paper

## III. Computer Setup

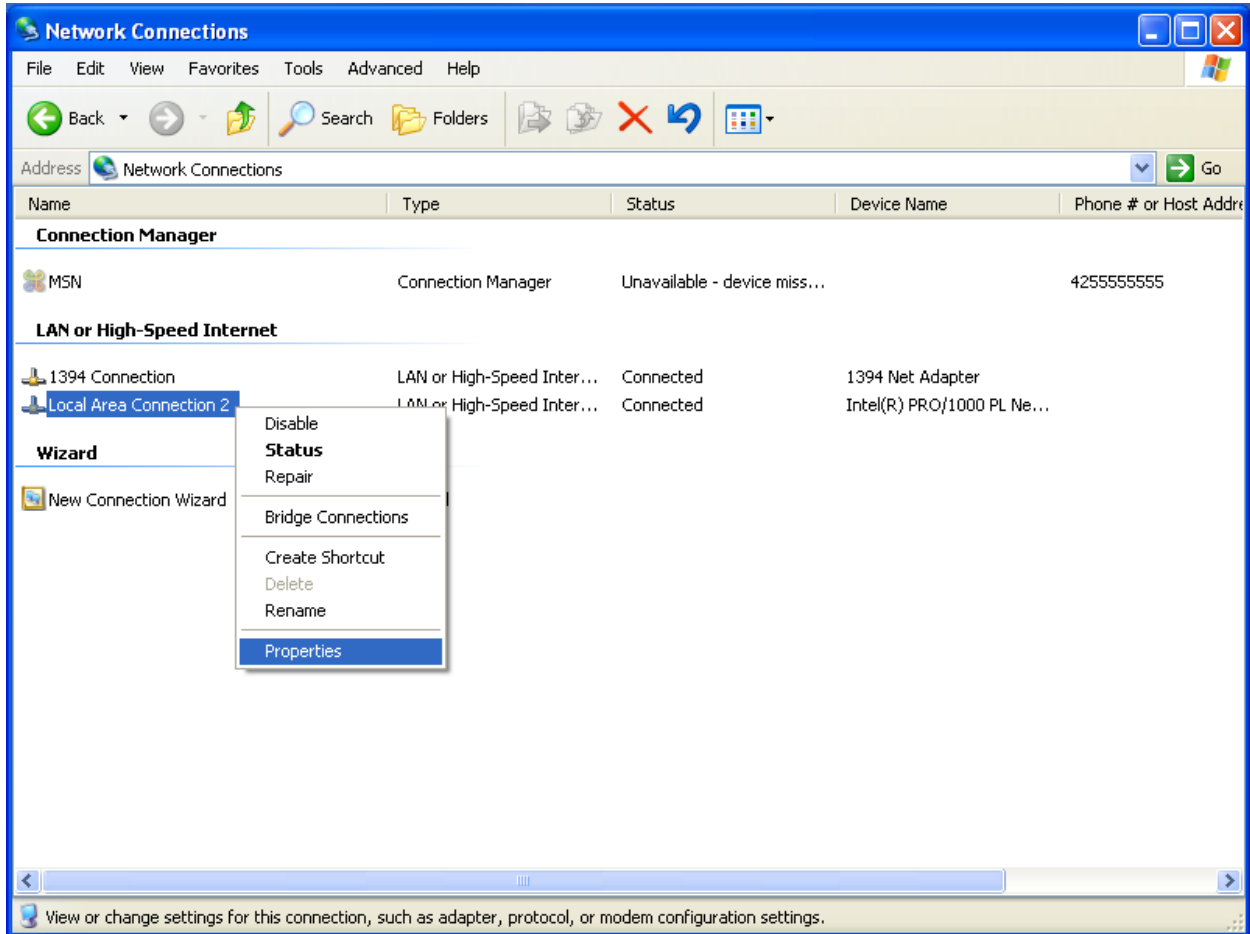
1. Disconnect the computer from any existing network connection.
2. Click the “Start” button in the lower left of the computer screen, then click “Control Panel”.



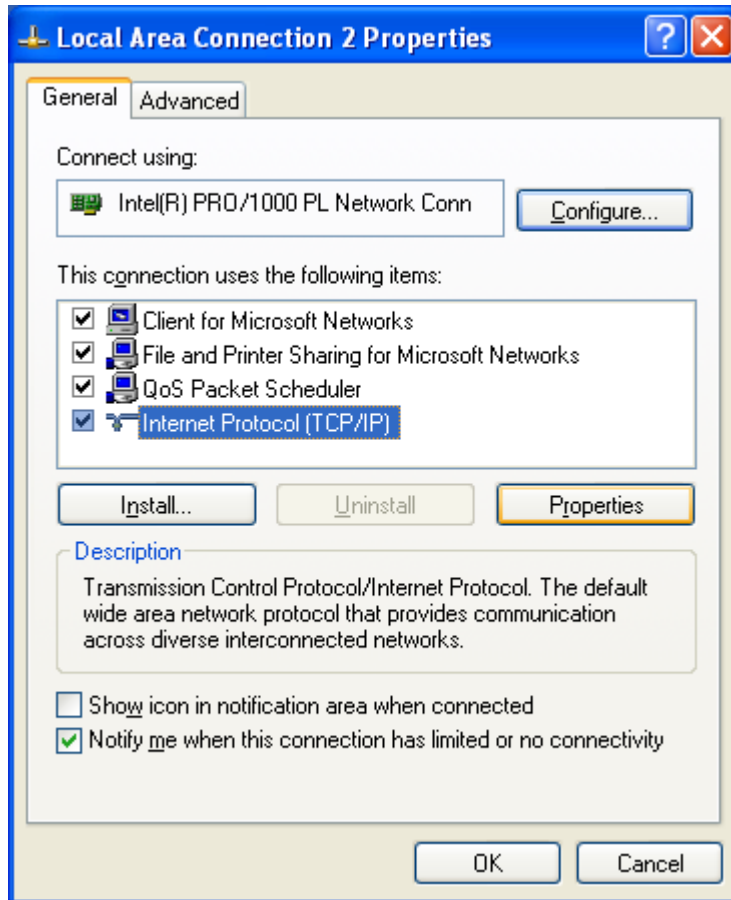
3. After the Control Panel opens, double-click “Network Connections”.



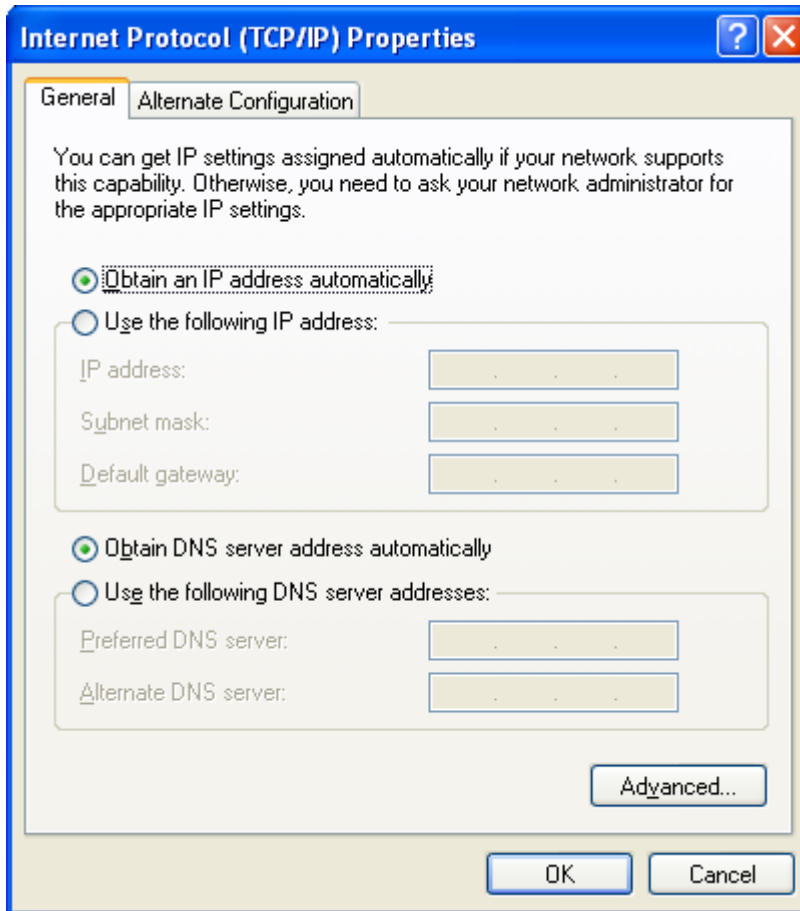
4. In the Network Connections window, locate the computer’s wired network connection. It should be listed in the “LAN or High-Speed Internet” group, and should have a name similar to “Local Area Connection”. Right-click on the connection, then left-click on “Properties”.



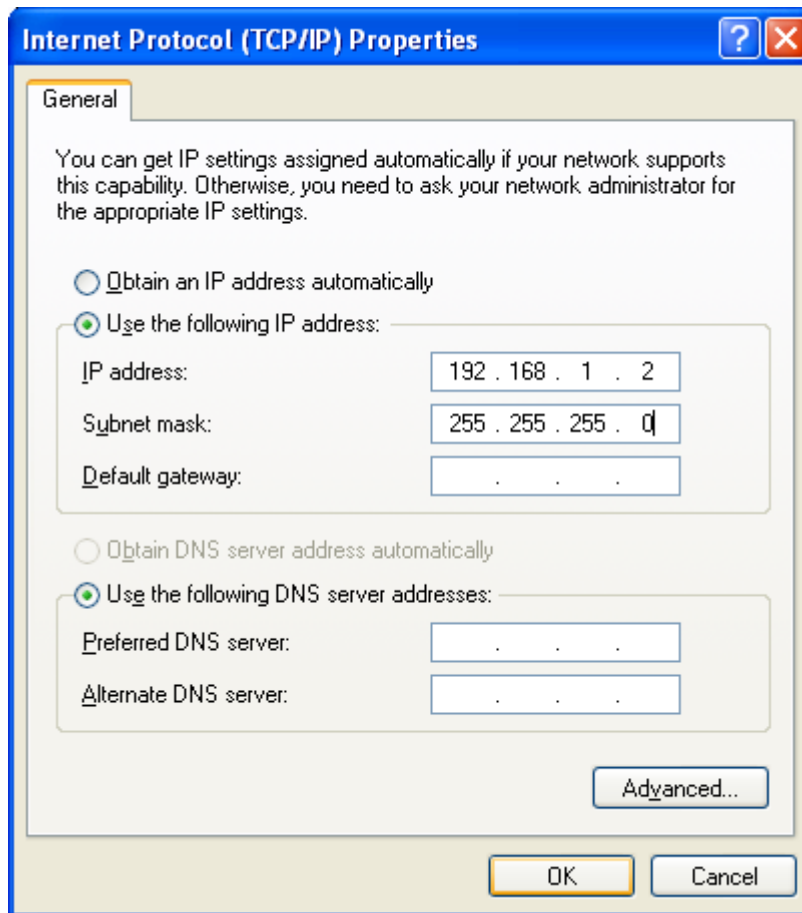
5. In the connection's properties window, select "Internet Protocol (TCP/IP)" by left-clicking on it once, then click the "Properties" button.



6. The “Internet Protocol (TCP/IP) Properties” window displays the computer’s current settings, and allows for the settings to be changed. Using pencil and paper, write down the computer’s current settings (these settings will be needed later to restore the computer to its original settings once the iControl has been set up).



7. Specify settings that are appropriate for an iControl product in a factory default state. Select “Use the following IP address:”, and enter 192.168.1.2 in the “IP address:” field. Enter 255.255.255.0 in the “Subnet mask:” field. Leave the other fields blank. When the properties window looks like the following image, press “OK”.



8. Computer setup is now complete. The computer may need to be rebooted after changing these settings for them to be applied properly.

#### **IV. iControl Setup**

1. Plug one end of the network crossover cable into the network jack on the rear of the iControl, and plug the other end into the computer's network jack.
2. Plug the iControl into an AC wall or floor receptacle.
3. After a few seconds, the computer and the iControl should establish a network connection. Open a web browser (Microsoft Internet Explorer 6 or higher is recommended), and navigate to: <http://192.168.1.199>
4. Login to the iControl web interface by selecting "Admin" from the drop down bar, and use the following for the password: admin
5. Navigate to the "Setup" menu and select "Network".
6. Change the network information to something suitable for your facility, and press "Save". The iControl will now reboot with the new network settings saved. If the iControl's network settings were changed from factory default, the unit will no longer be accessible from the computer with modified IP settings.
7. Disconnect the network crossover cable from the iControl and the computer.

#### **V. Final Steps**

1. Restore the computer's original network settings. Repeat "Section III. Computer Setup", and return the computer's settings to those written down earlier. The computer may need to be rebooted after saving the settings for them to be applied properly. Reconnect the computer to its original network connection.
2. Move the iControl unit to its final installation site, and connect it to the network using the standard network cable.
3. Follow the instructions in the iControl User Manual to complete setup of the iControl unit.