

Overview

The iControl Setup and Control Program (SCU) is designed to facilitate installation, configuration, and management of one or more iControls, SurgeX's web-enabled power conditioner.

With the Setup Program, users can:

1. Automatically discover multiple iControls on a local network.
2. Add additional iControls not on the local network.
3. Download existing configurations from installed iControls.
4. Save existing configurations for later use or as a backup.
5. Open saved configurations for change management.
6. Clone saved configurations for replication of similar configurations in multiple iControls.
7. Upload modified configurations to iControls.
8. Control outlets on one or more iControls throughout the network.

The iControl Setup and Control Program works securely through the network connection between a PC (running Windows 98 or higher) and the iControl. Administrator rights are required on the iControl to fully use the program. All communication between the program and the iControls is encrypted using AES.

Installation

The iControl Setup and Control Utility is distributed as an installation file "iControl_Setup.exe". This file can be also downloaded from SurgeX at www.surgex.com.

Use of the iControl Setup and Control Utility Version vQ110630G.123 requires iControl firmware Q101124G.279 or higher.

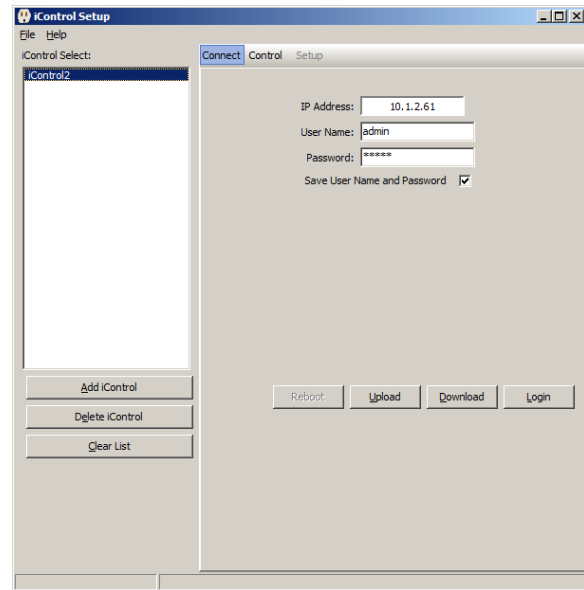
The "iControl_Setup.exe" installation program will extract the needed files. Run "iControl-SCU Setup.exe" to install the Setup and Control Utility.

SCU Program Screen

The iControl SCU Program screen is divided into two sections. The left column is a list select box for all iControls identified by the system. iControls can be identified by the “Discovery” function, or by using the “Add iControl” button.

The right side of the screen contains the Operations Tab Pages. It has three functions, denoted by tabs on the top of the column:

Connect	Upload, Download, Login and Reboot
Control	Operate Outlets
Setup	Manage Configuration

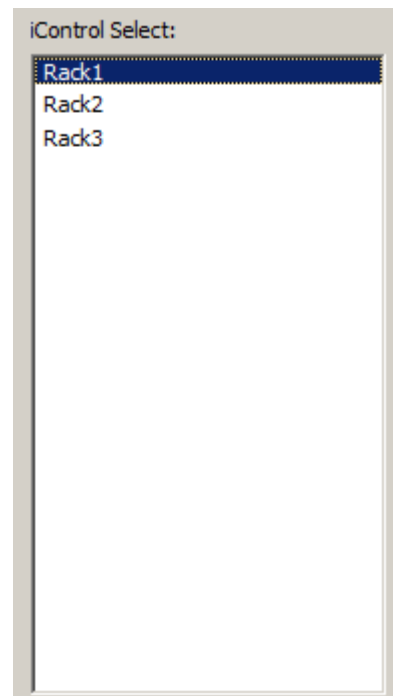


iControl Select List Box

The iControl Select List Box is located on the left side of the application. It is provided as a short cut to all of the user’s iControls. The list box can be populated in 2 ways. The first is to choose “Discover” from the File menu, and the second is to right-click on the list box and choose “discover”. The newly discovered iControls will be highlighted in light blue.

Selecting an iControl

To select an iControl from the list, simply click on the desired iControl. This action will place the selected iControl’s IP address into the IP Address field of the Connect Panel, Download Dialog Box, and the Upload Dialog box. This prevents the user from having to know the IP address of each iControl. The iControl SCU has the ability to remember the user name and password for each of the iControls in the iControl Select List Box. Once the user name and password have been entered in the appropriate fields on the control panel, they will remain in the program’s memory until the program has been closed. Additionally, the user name and password may be saved between sessions by checking the “Save User Name and Password” check box on the connect panel.



Upon selecting an iControl from the list box that has a username and password available, the program will automatically connect to the iControl, query the iControl, and switch to the control panel tab.

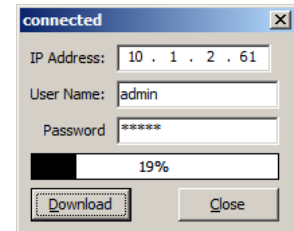
IMPORTANT NOTE: *Selecting iControls in the list select box does not change any configuration loaded into the program, either from a previously downloaded iControl, or from a new or opened configuration file. If modifying and uploading any configuration, first make sure you are working with the appropriate file or download.*

Popup Menus

As with most Windows applications, the user can right-click anywhere on the iControl Select List Box and a popup menu will be displayed. The list box has two different popup menus: one that is displayed when the user right-clicks on an iControl in the list box, and one that is displayed when the user right-clicks on white space. The white space menu is just a subset of the iControl popup menu. Each of the menu choices are outlined below.

Download

This choice is only available when the user right-clicks on an iControl in the iControl Select List Box. Selecting this choice will open the Download Dialog box, with the IP address preloaded. If the user name and password were saved previously, they will be preloaded as well. This allows the user a quick and easy way of downloading the setup information of an iControl.

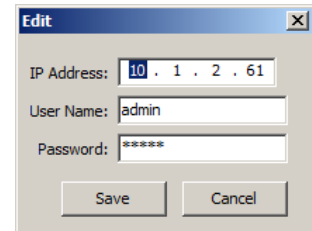


Upload

This choice is only available when the user right-clicks on an iControl in the iControl Select List Box. Selecting this choice will display the Upload Dialog Box (see Upload Dialog Box for details), with the IP address preloaded. If the user name and password were saved previously, they will be preloaded as well.

Edit

This choice is only available when the user right-clicks on an iControl in the iControl Select List Box. Selecting this choice will display the Edit Dialog Box. This dialog box allows the user to edit the IP address, user name, and password of the selected iControl. This is the only way the user can delete a previously stored user name and password. The Edit dialog box contains 3 fields, which are preloaded with the current data of the selected iControl. It is important to note that changes made here DO NOT affect the iControl itself.

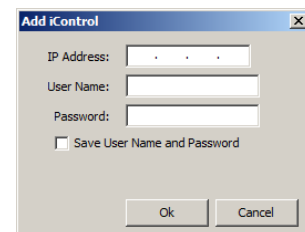


Delete

This choice is only available when the user right-clicks on an iControl in the iControl Select List Box. This choice is used to delete an iControl from the iControl Select List Box. To prevent accidentally deleting an iControl, the standard Windows confirmation dialog box is displayed before the iControl is deleted. This function is the same as the “Delete iControl” button below the List Select Box.

Add iControl

This choice is only available when the user right-clicks on white space (space below the last item in the list box) in the list box. This menu choice allows the user to manually add an iControl to the iControl Select List Box. Selecting this choice will display the Add iControl Dialog Box. This function is the same as the “Add iControl” button below the List Select Box.



Discover

This choice is only available when the user right-clicks on white space in the list box. This menu choice allows the user to discover all of the iControls on his local network. Clicking it will cause the iControl SCU to send a discover packet out over the local network. This command will NOT find iControls that are not on the local network. Use the Add iControl function for that purpose.

Clear List

This choice is only available when the user right-clicks on white space in the list box. This menu choice allows the user to delete ALL the iControls from the iControl Select List Box. To prevent accidental deletion, a confirmation dialog box is displayed to confirm the action. This function is the same as the “Clear List” button below the List Select Box.

List Buttons

Located directly below the list box there are buttons that allow the user to add or delete an iControl from the list box, as well as a button that clears (deletes) all iControls from the list box.

- **Add iControl Button**

This button displays the Add iControl dialog box. From this dialog box the user can add iControls to the list. This is the only way that an iControl that is not discoverable (off the local subnet) can be added to the list.

- **Delete iControl Button**

This button allows the user to delete the currently selected iControl. Clicking on this button will display a confirmation dialog box to help prevent accidentally deleting an iControl from the list.

- **Clear List Button**

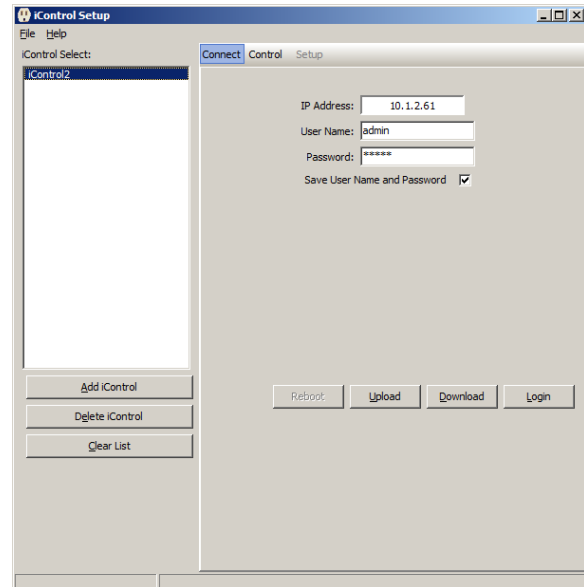
This button allows the user to delete all the iControls from the list. Clicking on this button will display a confirmation dialog box to help prevent the accidental deletion of all iControls. Note: There is no way to recover the deleted iControls. They will have to be rediscovered or manually added.

iControl Operation Tab Pages

The Operation Tab pages provide three functional operations: Connect, Control, and Setup.

Connect Panel

The connect panel is the first panel that is visible upon starting the program. It provides the user with the means to connect to the selected iControl. Once the user has selected an iControl, he will use this panel to enter the user name and password of the selected iControl. After entering the user name and password, the user can upload or download a configuration file, or login to (control) the selected iControl. The connect panel contains the following fields and buttons:



IP Address Field

This field displays the IP address of the selected iControl. This field is display only, and cannot be edited.

User Name Field

The user name field is used to enter the user name of a valid user of the iControl. The user name must first be programmed into the iControl (factory default user name/password is admin/admin). This field will be automatically filled in each time the iControl is selected from the list box, provided that the user has entered the user name previously during the current session, or has saved the user name and password for the selected iControl.

Password Field

The password field is used to enter the password corresponding to the user entered in the user name field. The password must first be programmed into the iControl (factory default user name/password is admin/admin). This field will be automatically filled in when an iControl is selected from the list box, provided that the user has entered the password previously during the current session, or has saved the user name and password for the selected iControl.

Save User Name and Password Checkbox

Checking this check box will save the user name and password for the selected iControl. The save takes place when any of the control buttons are pressed. The file that contains the user name and password is AES encrypted for security purposes.

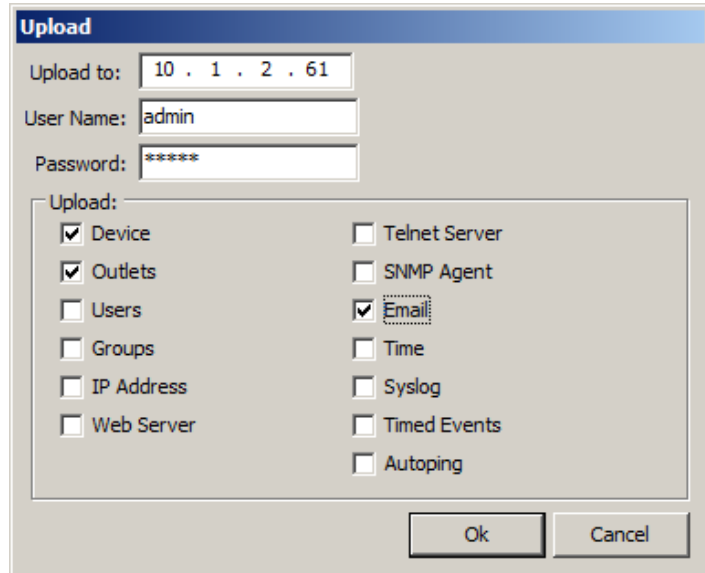
IMPORTANT NOTE: It is important to check the file or source prior to uploading any configuration. Make sure the configuration you are uploading is from the appropriate source, and contains the information desired. Uploading to multiple units with the same IP address may have undesirable consequences.

Upload Button

This button displays the Upload Dialog Box with the IP address, username, and password of the selected iControl.

Upload Dialog Box

The upload dialog box is displayed when the Upload Button on the Connect Page is clicked, or when the iControl in the list view is right-clicked and Upload is selected. It is provided to allow the user to select the tabs that he wishes to upload. By default, only the tabs that have been changed will be selected when the dialog box is first displayed.



Upload To

Use this field to set the IP address of the iControl to upload to in dotted decimal. This field is preloaded with the IP address of the selected iControl. Only valid IP address will be accepted.

User Name

Use this field to enter a valid user on the iControl being uploaded to. If the user has previously connected to the iControl and saved the information, this field will be preloaded. The user **MUST** have administrative rights on the iControl in order for the operation to complete. If the user does not have administrative rights, an error dialog box with the message “Invalid rights” will be displayed after the OK button has been pressed.

Password

Use this field to enter the password of the user entered in the user name field. If the user has previously connected to the iControl and saved the information, this field will be preloaded. The password field is masked, and “*” will be displayed in place of the characters entered.

Upload Check Boxes

Use the upload check boxes to select the tabs to be uploaded to the iControl. If changes have been made in Setup, the tabs with changes will be pre-selected.

OK Button

Press the OK button to start the upload.

Cancel Button

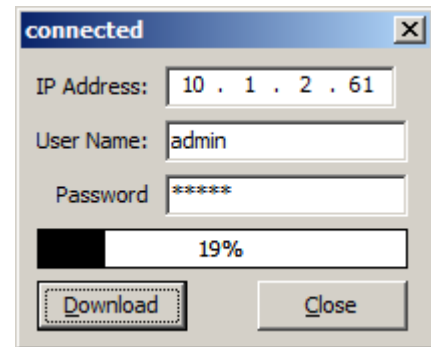
Press the cancel button to cancel the upload, or to close the dialog box.

Download Button

This button displays the Download Dialog Box with the IP address, username, and password of the selected iControl. After the download is complete, the setup pane will be displayed.

Download Dialog Box

The download dialog box is displayed when the Download Button on the Connect Page is clicked, or when the iControl in the list view is right-clicked and Download is selected. The dialog box provides fields to enter the IP address of the iControl as well as the user name and password. A progress bar displays the progress of the download.



IP Address

Use this field to enter the IP address of the iControl to download the configuration file from. The IP address must be entered in dotted decimal format and must be a valid IP address. This field is preloaded with the IP address of the selected iControl. Only valid IP address will be accepted.

User Name

Use this field to enter a valid user on the iControl being downloaded from. The user MUST have administrative rights on the iControl. If the user name and password are saved, this field is preloaded from the selected iControl.

Password

Use this field to enter the password of the user entered in the user name field. The password field is masked, and '*' will be displayed in place of the characters entered. If the user name and password are saved, this field is preloaded from the selected iControl.

Progress Bar

The progress bar displays the progress of the download.

Download Button

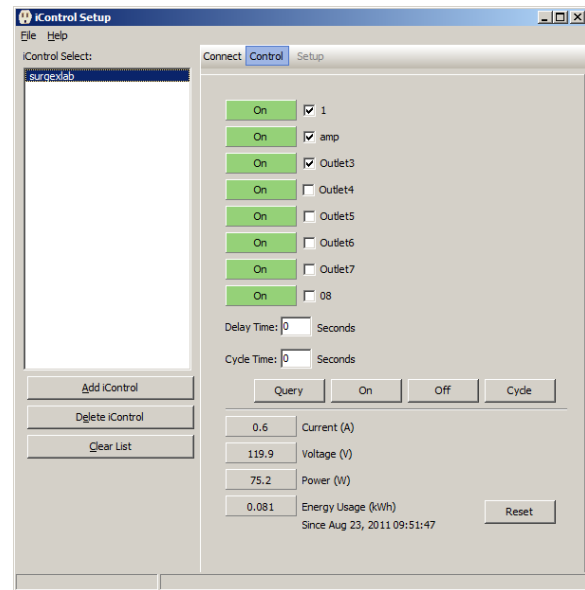
Press this button to start the download.

Close Button

Press this button to close the dialog box.

Control Panel

The Control Panel is located just below the Operations Tabs when the iControl SCU is in Control mode. The control mode is entered by clicking Login on the Connect Panel, selecting an iControl from the iControl select list box that has a saved user name and password, or by clicking on the control button in the task bar. The control panel will not be displayed if no user name and password has been entered on the connect panel. The control panel is displayed as a blank panel if it is accessed with an invalid user name and password. The control panel contains the following elements:



Outlet Check Boxes

The outlet check boxes are used to select the outlets the user wishes to control. The text next to each check box is the actual outlet name retrieved from the iControl. All check marks are cleared whenever an iControl is selected from the iControl List Box.

Outlet Status Bars

The outlet status bars are used to display the status of the outlets. The background color indicates the current state of the outlet: green for on, and grey for off. The text in the panel tells the user whether the outlet is on, off, rebooting or cycling.

Delay Time

Delay Time is the amount of time that will be delayed between outlet changes when making changes to multiple outlets. The Delay Time edit box displays the iControl's current delay time and allows for the specification of a new delay time. Acceptable values are 0-99 seconds. The new delay time is applied when the On, Off, or Cycle command is sent to the iControl.

Cycle Time

The cycle time edit box displays the iControl's current cycle time and allows for the specification of a new cycle time. The new cycle time is applied when the On, Off, or Cycle command is sent to the iControl. Acceptable values are 1-99 seconds.

Current Display Bar

The current display bar displays the total current measured through all outlets. The background color will be grey when the current is in the normal range, yellow when a low current alarm is active, and red when a high current alarm is active.

Voltage Display Bar

The voltage display bar displays the measured line voltage. The background color will be grey when the voltage is in the normal range, yellow when a low voltage alarm is active, and red when a high voltage alarm is active.

Power Display Bar

The power display bar displays the calculated total power currently being consumed by all outlets.

Energy Display Bar

The energy display bar displays the calculated total energy used by all outlets since the displayed date and time.

Control Buttons

There are 5 control buttons located at the bottom of the control panel. The function of each of these is described below. All commands sent to the iControl and all responses from the iControl are encrypted using AES.

Query Button

This button sends a 'query' request to the selected iControl to refresh the displayed information.

On Button

This button sends the 'on' command to the selected iControl. The Auto Refresh feature will be started after the command is sent if required. See below.

Off Button

This button sends the 'off' command to the selected iControl.

Cycle Button

This button sends the 'cycle' command to the selected iControl. If the selected outlets are currently on, a reboot will be performed. If the selected outlets are off, a power cycle will be performed. The auto refresh feature will be started after the command is sent.

Reset Button

This button resets the Energy Usage of the selected iControl.

Auto Refresh

The auto refresh feature sends the 'query' command to the selected iControl until one of the following happens:

1. No outlets are in transition (Pending On, Reboot, Cycle)
2. A different iControl is selected.

The auto refresh uses the delay time as its time base.

Setup Panel

The setup panel is made up of 3 parts: Tab control, File bar, and Edit pane. Each of these is described below.

Tab Control

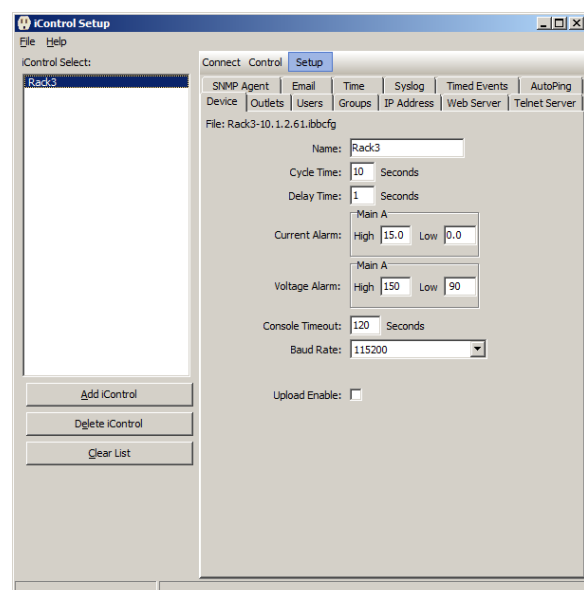
The Tab control is used to select the desired edit pane. There are 13 different tabs on the tab control. These are outlined below.

File Bar

The File Bar is located right below the tab control. It displays the name of the iControl configuration file, or download source that is currently being edited.

Edit Pane

The Edit Pane contains all of the elements that can be edited for the selected tab.



Tabs

The following outlines all of the tabs and the elements that will be displayed in the associated panes.

- **Device**

The Device tab is used to set up the general information about the device.

Name: This field is used to set the name of the iControl. It will accept all printable characters. The maximum length of the name is 20 characters.

Cycle Time: This field sets the default cycle time for the iControl. It accepts numeric values from 1-99 only.

Delay Time: This field sets the default delay time for the iControl. It accepts numeric values from 0-99 only.

Current Alarm: This field is used to set the High and Low current alarms. The maximum allowed value will change depending on the model of the iControl. The High and Low current alarms will accept numeric values from 0.0 to 15.0 for 15 amp models and 0.0 to 20.0 for 20 amp models.

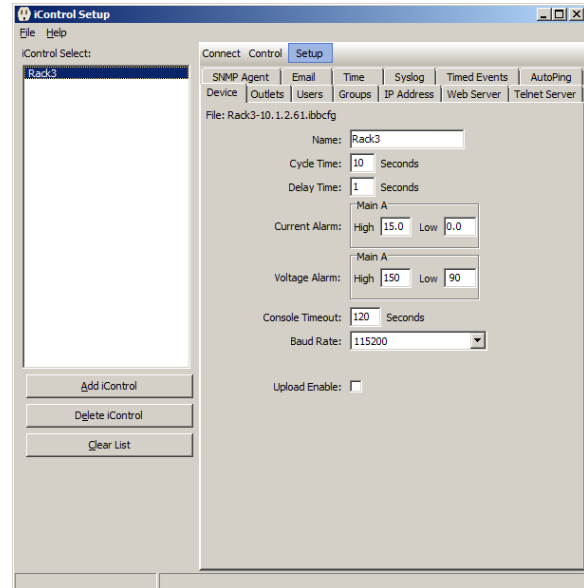
Voltage Alarm: This field is used to set the High and Low voltage alarms. The High alarm will accept numeric values from 135 to 150 and the Low alarm will accept numeric values from 90 to 105.

Console Timeout: This field allows the specification of the amount of time that a console session will remain active without any activity. This effects all CLI connections. The field accepts numeric values from 30 to 3600. (30 seconds to 1 hour).

Baud Rate: This field allows the specification of the baud rate for the iControl's serial port. The choices are 2400, 4800, 9600, 19,200, 38,400 57,600 and 115,200 bits per second.

Country Code: The country code is used to set the modem's country code. See Appendix A for a list of country codes. This field is only displayed for models that have a modem.

Upload Enable: This field is used to enable or disable the iControl's ability to accept field upgrades. When the check box is checked, the iControl will be able to accept field upgrades.



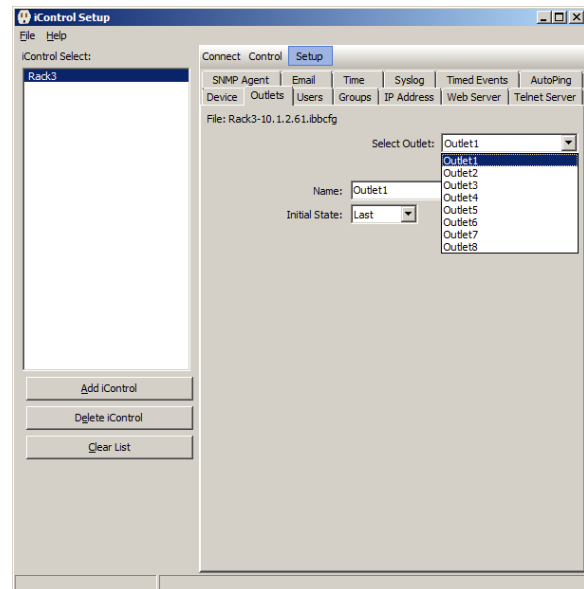
- **Outlets**

The Outlets tab is used to program all 8 of the iControl's outlets.

Select Outlet: This combo box allows for selection of the outlet to be programmed. It is initially populated with the default outlet names, but is populated with the user defined names as they are entered. The outlet names are always displayed in outlet order (1-8).

Name: This field is used to define the name of the selected outlet. This name will appear on the iControl's web page and CLI. It will accept all printable characters. The maximum length of the name is 20 characters.

Initial State: This combo box is used to set the startup state of the selected outlet. This setting is used on cold boots only. Warm booting has no effect on the outlet state.



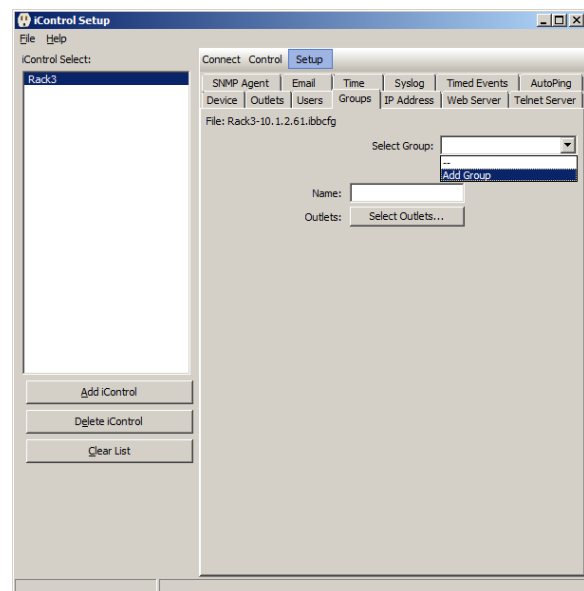
- **Groups**

The Groups tab is used to add, delete and edit outlet groups.

Select Group: This combo box is used to add, delete, or select a group to be edited. To add a group, select "Add Group" from the combo box. This will create a new group with the name NewGroup n , where n is the group's internal ID number. To delete a group, select the group to be deleted using the combo box. Then select "Delete Group" from the combo box. A confirmation dialog will be displayed to prevent accidentally deleting a group. To edit a group, select the group to be edited using the combo box.

Name: This field is used to edit the name of the selected group. The group name can be made up of any printable character, and be up to 20 characters in length.

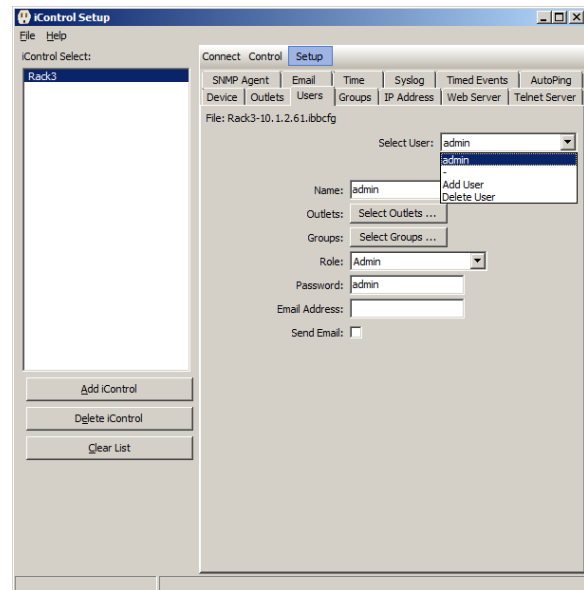
Outlets: This button will display the Select Outlets dialog box. Use this dialog box to select the outlets that will belong to this group.



- **Users**

The users tab allows for the management of user accounts, including the ability to add, delete, or edit one of up to 16 users.

User Select: This combo box is used to select the user to be edited, add a new user, or delete the currently selected user. To add a user, select “Add User” in the combo box and a new user will be added. The default name of this user is New User n , where n is the user’s internal ID number. At this point all of the user’s settings can be edited. To delete a user, first select a user using the select user combo box. This will cause the selected user’s information to be displayed. Next select “Delete User” from the select user combo box and the selected user will be deleted. To edit an existing user, simply select that user from the user select combo box and begin editing.



Name: This field is used to edit the user’s name. The name can contain any printable character and be up to 20 characters in length.

Outlets: This button will display the Select Outlets dialog box. Use this dialog box to choose the outlets that the selected user is to have rights to.

Groups: This button will display the Select Groups dialog box. Use this dialog box to choose the groups that the selected user is to have right to.

Role: Use this combo box to select the user role. The user can be either a “User” or an “Administrator”.

Password: Use this field to edit the user’s password. The password can contain any printable character and be up to 20 characters in length.

Email Address: Use this field to set the user’s email address. This address can be no longer than 64 characters. The email address is only used if Send Email has been checked.

Send Email: Use this check box to enable the sending of email to the selected user when an outlet (that the user has rights to) has its state change.

DTMF PIN: Use this field to enter the user’s PIN for the DTMF interface. This field is only available for models with a modem. Only numbers are accepted. The PIN must be 4 to 10 characters in length.

- **IP Address**

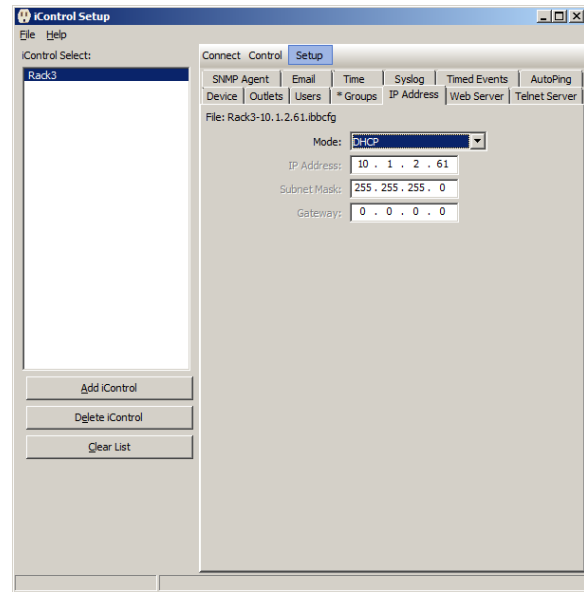
Use this tab to set the iControl's network settings.

IP Mode: Use this combo box to select the iControl's IP addressing mode. The choices are Static, Arp Ping, and DHCP.

IP Address: Use this field to manually enter the iControl's IP address in dotted decimal format. Only valid IP address will be accepted.

Subnet Mask: Use this field to manually enter the subnet mask for the iControl in dotted decimal format.

Gateway: Use this field to manually enter a gateway's IP address in dotted decimal format. Only valid IP addresses will be accepted.



- **Web Server**

Use this tab to configure the iControl's internal web server.

Enable: Use this check box to enable or disable the iControl's internal web server.

Port: Use this field to specify the port the web server will listen on. Numeric entries between 1 and 65532 are accepted.

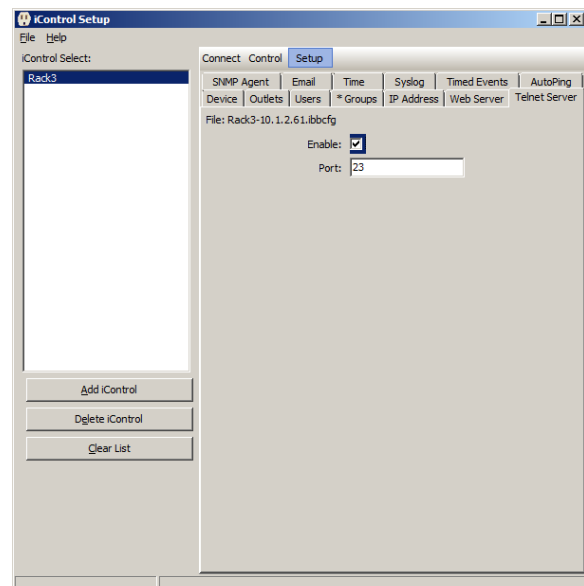
SSL: Use this check box to enable or disable SSL security. When enabled, the iControl must be accessed using <https://ipaddress>.

- **Telnet Server**

Use this tab to configure the iControl's internal telnet server.

Enable: Use this check box to enable or disable the telnet server.

Port: Use this field to specify the port the telnet server will listen on. Numeric values between 1 and 65535 are accepted.



iControl Setup and Control Utility (SCU)

- **SNMP Agent**

Use this tab to configure the iControl's internal SNMP agent.

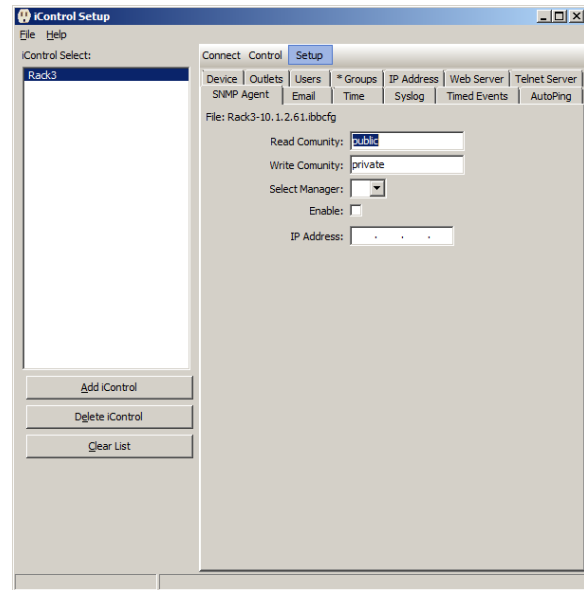
Read Community: Use this field to edit the iControl's read community name. The community name must contain printable characters only and cannot exceed 32 characters in length.

Write Community: Use this field to edit the iControl's write community name. The community name must contain printable characters only and cannot exceed 32 characters in length.

Select Manager: The iControl can send traps to up to 4 SNMP managers. Use this combo box to select one of the 4 managers.

Enable: Use this check box to enable or disable traps to the selected manager.

IP Address: Use this field to set the IP address of the selected SNMP manager.



- **Email**

Use this tab to set up the iControl's internal email client. The email client only has the ability to send mail. As such only the address of the SMTP server's address is needed.

Server IP Address: The IP address of the SMTP server the iControl is going to use to send email, in dotted decimal. Only valid IP address will be accepted.

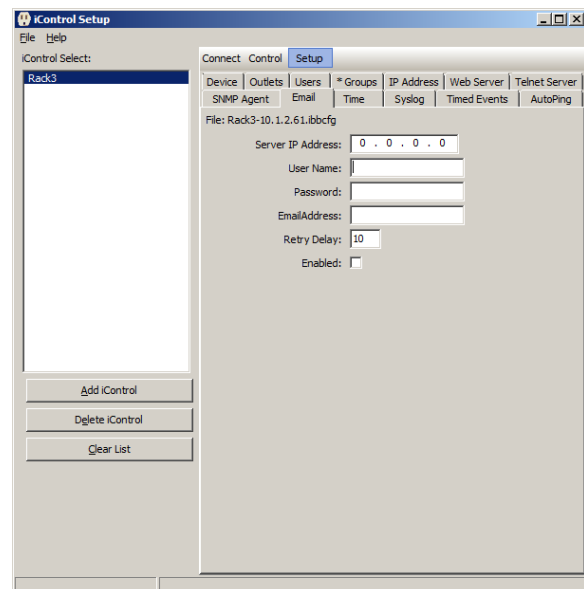
User Name: Use this field to enter the user name for the iControl to use to login to the SMTP server. The name can contain printable characters only and cannot exceed 32 characters in length.

Password: Use this field to set the password for the SMTP server. The password can contain printable characters only and cannot exceed 32 characters in length.

Email Address: Use this field to enter the return address for all email sent by the iControl. The email address can contain printable characters only and cannot exceed 32 characters in length.

Retry Delay: Specifies the number of times the iControl's email client will try to send an email.

Enabled: Check this box to enable the email delivery system.



- **Time**

Use this tab to set up the iControl's NTS client, or to set the iControl's internal time clock.

Server IP Address: Use this field to set the IP address of the NTS server in dotted decimal.

Enable: Use this check box to enable or disable the iControl's NTS client. When disabled, the time and date fields will be displayed to allow the user to set the iControl's on board Real Time Clock.

Time Zone: Use this field to set the current time zone. This field accepts numeric values from -12 to 12.

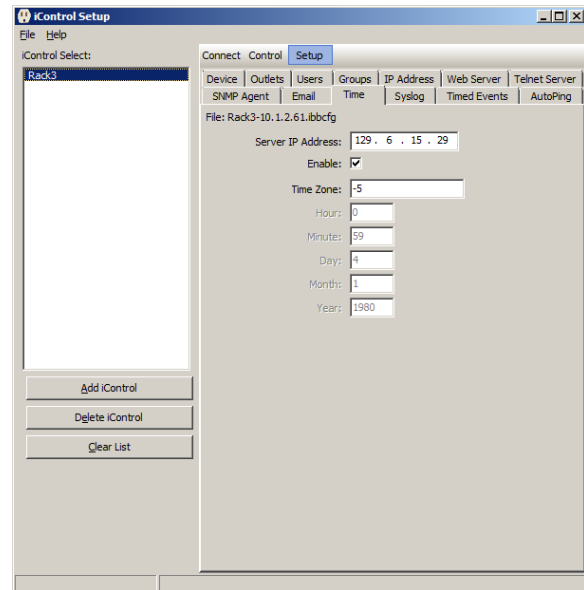
Hour: This field is enabled when the NTS client is disabled. Use this field to set the hour of the day in 24 hour format. Numeric values between 0 and 23 are accepted.

Minute: This field is enabled when the NTS client is disabled. Use this field to set the minute of the hour. Numeric values between 0 and 59 are accepted.

Day: This field is enabled when the NTS client is disabled. Use this field to set the day of the month. Numeric values between 1 and 31 are accepted.

Month: This field is enabled when the NTS client is disabled. Use this field to set the month of the year. Numeric values between 1 and 12 are accepted.

Year: This field is enabled when the NTS client is disabled. Use this field to enter the current year. Numeric values between 2007 and 2048 are accepted.
Note: the iControl's RTC only supports dates until 2048.



- **Syslog**

Use this tab to set up the iControl's internal Syslog Client. Syslog uses UDP on **Port 514**.

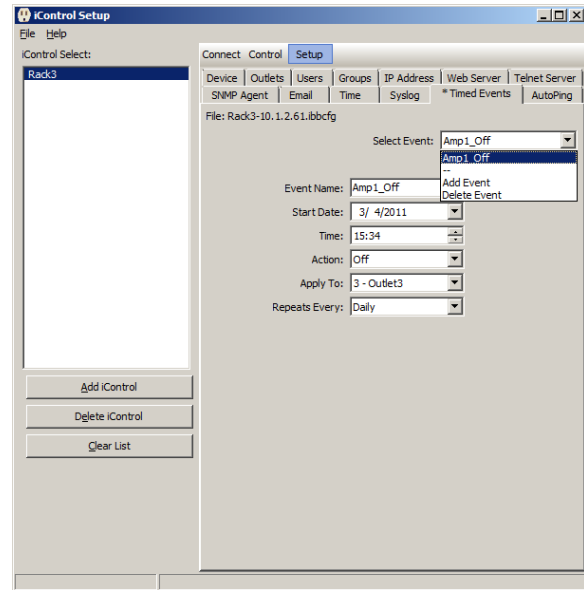
Server IP Address: Use this field to enter the IP address of the Syslog Server that the iControl is to send messages to, in dotted decimal.

Enable: Use this check box to enable or disable the syslog client.

- **Timed Events**

Use this tab to add, delete, and edit timed events.

Select Event: Use the select event combo box to add, delete, or select an event to be edited. To add an event, select “Add Event” from the combo box. This will create a new timed event with the name “NewEvent n ”, where n is the event’s internal ID number. To delete an event, select the event to be deleted using the select event combo box, then select “Delete Event”. A confirmation dialog will be displayed to prevent the accidental deletion of an event. To edit an event, select the event to be edited using the combo box.



Start Date: Use the Start Date combo box (date picker) to select the date that the event will be triggered.

Time: Use the time picker to set the time of day that the event is to be executed.

Action: Use the Action combo box to select the action to be taken on the specified date and time. The selections are Off, On, and Cycle.

Apply To: Use the Apply To combo box to select the outlet or group that the event will affect.

Repeats Every: Use the Repeats Every combo box to select if and when the event repeats. The selections are Never, Daily, Weekly, Monthly, and Annually.

- **AutoPing**

Up to 16 AutoPing Trigger/Action pairs can be set and assigned to any outlet or group. One outlet can be controlled by multiple AutoPing events. Use this tab to add, delete, and edit AutoPing triggers and actions.

Select AutoPing: Use the Select AutoPing combo box to select one of 16 AutoPing events to manage.

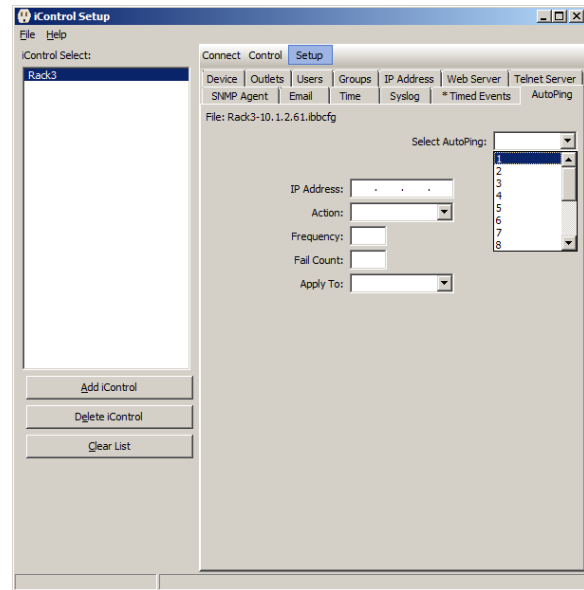
IP Address: This field is used to set the IP address of the AutoPing to monitor, in dotted decimal format.

Action: The Action combo box is used to select the action performed when Autoping is triggered.

Frequency: This field is used to set the time interval, in seconds, between pings of the specified IP address. Numeric values between 0 and 999 are accepted.

Fail Count: This field is used to set the number of successive times that the ping must fail before the action is triggered. Numeric values between 1 and 99 are accepted.

Apply To: This combo box is used to select the outlet or group that the AutoPing will affect.



Main Menu

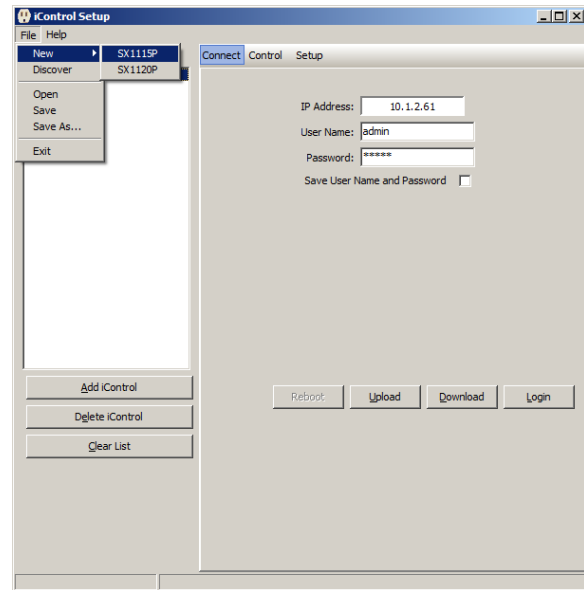
The main menu is located on the top left of the application just below the title bar. This menu contains two sub menus, File and Help.

File

- **New**
This menu item will list the two different iControl models. Clicking one of these will populate all pages of the setup tabs with the factory default settings of the selected model.
- **Discover**
This menu item provides the automatic discovery of all iControls on the local network. Clicking it will cause the iControl SCU to send a discover packet out over the local network. This command will NOT find iControls that are on the internet, or that are not on the local network.
- **Open**
This menu item allows for the selection of a previously saved iControl Configuration File (*.ibbcfg).
- **Save**
This menu item allows the configuration file currently in use to be saved.
- **Save As**
This menu item allows the configuration file currently in use to be saved with a different name.
- **Exit**
This menu item exits the program.

Help

- **About**
This menu item displays information about the SCU program revision.



Appendix A (Modem Country Codes)

Note: Use of the wrong countrycode violates local laws and the warranty of this product.

Country	countrycode	Country	countrycode
Argentina	07	Latvia	253
Australia	09	Liechtenstein	253
Austria	253	Lithuania	253
Belgium	253	Luxembourg	253
Brazil	22	Malaysia	108
Bulgaria	253	Malta	253
Canada	181	Mexico	181
Chile	153	Netherlands	253
China	181	New Zealand	126
Cyprus	253	Norway	253
Czech Republic	253	Philippines	181
Denmark	253	Poland	253
Estonia	253	Portugal	253
Finland	253	Russia	253
France	253	Singapore	156
Germany	253	Slovak Republic	253
Greece	253	Slovenia	253
Hong Kong	153	South Africa	159
Hungary	253	Spain	253
Iceland	253	Sweden	253
India	153	Switzerland	253
Indonesia	153	Taiwan	254
Ireland	253	Thailand	181
Israel	181	Turkey	253
Italy	253	United Kingdom	253
Japan	00	United States	181
Korea	181		