

OVERVIEW

This manual explains the procedure to upgrade the firmware of an iControl. This manual and figures, (screenshots) assume a default IP address of 192.168.0.254, and default location for the program files as C:\SurgeX\iControl.

BEFORE YOU BEGIN

Upgrading the iControl will result in changes to the power outlets. Remove the iControl from service prior to upgrading the firmware.

The PC running the iControl upgrade program must be on the same subnet as the iControl(s).

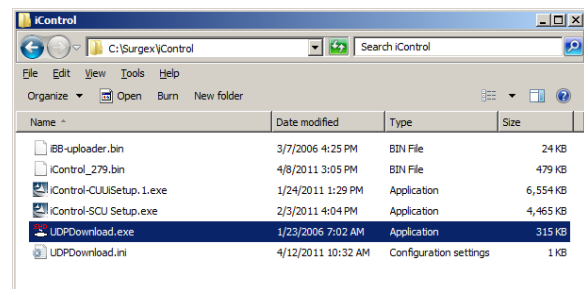
Upgrading the iControl requires that Upload Enable is set to yes. Use the **set upload enable yes** command prior to attempting an upgrade.

Upgrading the iControl may result in a reset to original factory defaults. This will include the default IP address of 192.168.0.254. If you need access to the iControl subsequent to the firmware upgrade, make sure in advance that you can access this IP Address.

UPGRADE PROCEDURE

1. Run UDPDownload.exe

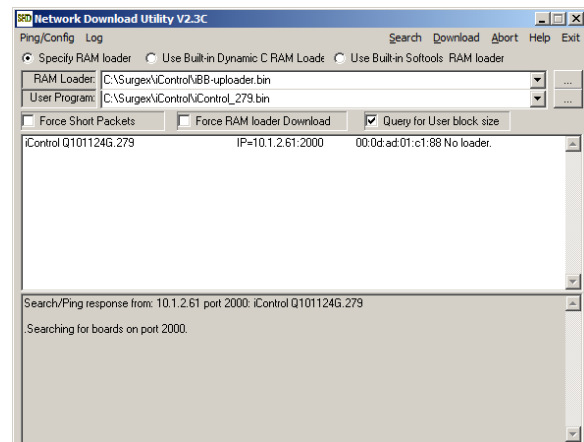
Locate the “UDPDownload.exe” program in the C:\SurgeX\iControl directory (or other directory, if applicable). Install this program from the CD included with the iControl, or from the SurgeX website at <http://www.surgex.com/loginFirmware.asp>.



2. Load the RAM Loader and Firmware Image file

Two files are required by the Upgrade Utility to function. The RAM Loader file is “iBB-uploader.bin”. If this file is not listed in the upper address bar of the upgrade program, click on the ellipsis (...) button and browse for the file.

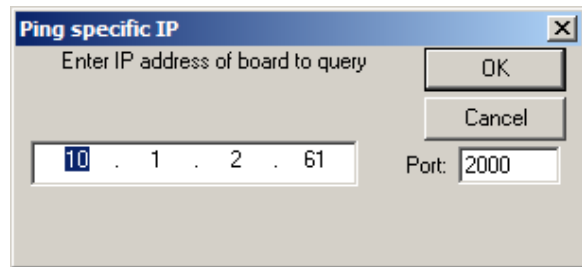
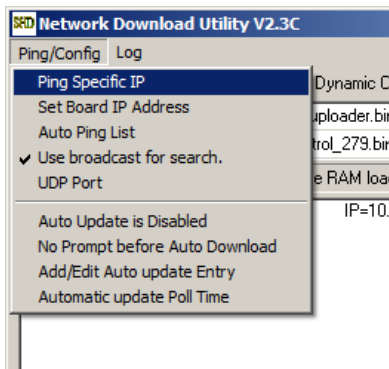
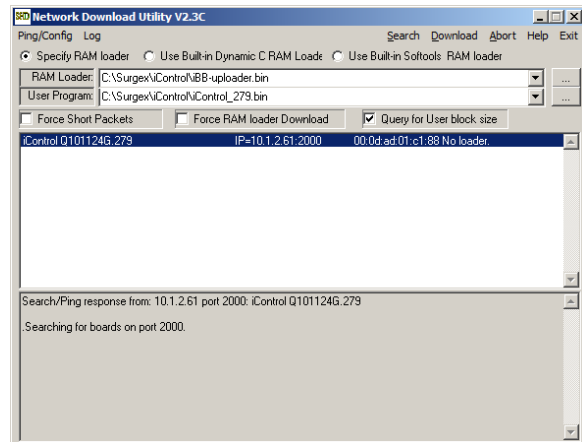
The iControl firmware image file is designated in the second address line. Verify that this file designates the firmware version you intend to upgrade to. If it is not, click on the ellipsis (...) button and browse for the desired file.



3. Target the iControl for Upgrade

The center panel of the upgrade program displays all iControls that were automatically discovered at the start of the program. If the iControl to be upgraded is shown, highlight that unit.

If the intended iControl is not shown, click on “Ping/Config”, and then click “Ping Specific IP”, then enter the IP address of the iControl. If the iControl is properly located, it will appear in the listing of available iControls.



4. Start Download Process

Click “Download” on the upper right Menu bar. The RAM Loader will be downloaded quickly, and then the firmware image will download. Upon completion, the iControl will reboot, and the upgrade process is complete.

If the upgrade was a minor release, the original settings of the iControl will be maintained. If the upgrade was a major release, all settings will be returned to their Factory Default state.

