

Finally, a back up system You can believe in.

Surge Eliminator/Power Conditioner
Line Interactive 1000 VA UPS
with Automatic Voltage Regulation



Protect your mission critical AV equipment with the new 1000 VA UPS Surge Eliminator.



Superior to standby UPS products, the SU-1000-Li provides faster response, automatic voltage regulation, and battery backup during a brownout, blackout, surge, or power failure.

Unlike other UPS products, our SU-1000-Li 1000 VA Line Interactive UPS is backed with SurgeX Advanced Series Mode[®] patented surge elimination technology to shield computer and AV equipment from catastrophic damage. The SU-1000-Li also includes common mode and normal mode Impedance Tolerant[®] EMI/RFI filtering, and sophisticated software to manage power settings and diagnostics, monitor multiple units, and schedule shutdowns and restarts.

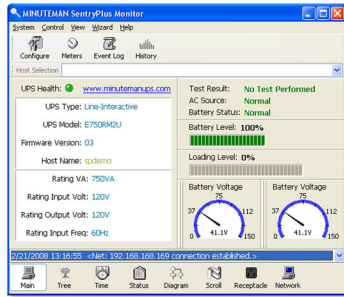
- Provides A-1-1 Certified fail safe protection from surges, spikes, blackouts, and brownouts.
- Automatic voltage regulation provides a stable AC source during less than optimal power conditions without constant use of internal batteries.
- Includes SentryPlus[™] UPS power management and diagnostic software.
- Over/Under Voltage Protection
- Advanced Series Mode[®] surge elimination technology stops all surges up to 6,000 volts without producing harmful side effects such as ground contamination or common-mode disturbances, is superior to conventional MOV and MOV-Hybrid circuitry, and is completely non-sacrificial.
- Credenza Friendly-Only 10.5" deep!

FEATURES

- 2U Rack Mount
- 1000 VA Battery Backup
- Advanced Series Mode[®] Surge Elimination
- Impedance Tolerant[®] EMI/RFI Filter
- Automatic Voltage Regulation
- Over/Under Voltage Protection
- SentryPlus[™] Power Management and Diagnostic Software
- USB port
- Self-test Circuit and Visual Indicator
- Receptacles:
6 Surge Elimination
2 UPS / 4 Non-UPS
- 10 Year Product Warranty
- 2 Year Battery Warranty
- A-1-1 Certified
- RoHS Compliant
- Made in U.S.A.

SentryPlus™ Power Management and Diagnostic Software

- Plan a schedule to shutdown, restart, test UPS and control receptacles
- Customize programmable actions
- Set up notifications of user-defined power related events via pager, e-mail, audible alarm, network broadcast and SNMP trap
- View Real-time UPS data meters (voltage, frequency, loading percentage)
- Analyze power history and event records via software data and graphs
- Configure Multi-computer shutdown/wakeup through TCP/IP network
- Access remote monitoring, control and configuration through TCP/IP network
- Monitor and network multiple UPSs at a glance in a LAN
- Communicate to UPS using Universal Serial Bus (USB)



Technical Description

The SU-1000-Li is a 1000 VA line interactive uninterruptible power supply, surge eliminator, and power conditioner in a magnetically shielded steel enclosure. It operates from 120 volts AC and has a 6-foot, grounded, 3-wire #14 line cord. It has 4 grounded AC receptacles and two of these provide battery back up protection. Overall dimensions are 3.5" H x 19.0" W x 10.5" D. Weight is 32.0 pounds.

The SU-1000-Li has a load rating of 15 amps at 120 volts, a self-test circuit with visual indicator, and provides EMI/RFI filtering. It meets Federal Grade A, Class 1, Mode 1 guidelines for power line surge suppressors and withstands at least 1000 occurrences of surge pulse voltages, up to 6000 volts. SentryPlus™ auto shutdown and monitoring software is also included with SU-1000-Li hardware.

The SurgeX Difference

SurgeX is the leading manufacturer of premium AC power conditioning products for the professional audio, video, broadcast, and multi-media marketplace. Our patented technology provides the highest level of protection against AC spikes, surges and transients, and ensures optimum performance from sensitive electronics.

- **100% Fail Safe Protection**
- **A-1-1 Certified**
- **All SurgeX products are backed by an industry leading 10 Year Warranty.**



SPECIFICATIONS

AC INPUT

Number of Phases: Single (2W + G)
Power Cord: 6-ft. grounded, 3 wire, #14 line cord
Input Voltage (Acceptable Input Voltage): 120VAC (0 - 160VAC)
Input Voltage Range (Normal mode): 90 - 150VAC
DC Start Capability: Yes, (defaults to 60Hz)
Power Requirements (no load): 35 watts (charging), 15 watts (charged)

AC OUTPUT (NORMAL MODE)

Load Rating: 15 Amps @ 120 volts
Load Power Factor: 0.6
Outlets: 6 outlets (15 Amp) all with Advanced Series Mode surge elimination, 2 outlets with battery back-up
Output Frequency: Same as Input
Short Circuit Protection: Re-settable circuit breaker and electronically limited
Overload Capability: 110% - 5 minutes ≥ 120% - immediate shutdown
Output Voltage Regulation: 120VAC: -12.5% to +8.4%
Waveform: Same as Input
Boost Mode Voltage (Buck mode voltage): Nominal +16% (Nominal -1.4%)
Line Mode Voltage Range: 105 - 130VAC
Efficiency: Normal mode > 90%

AC OUTPUT (BATTERY MODE)

Capacity: 1000VA/600W
Back-up Run Time: 4 minutes 600W full load, 10.4 minutes 300W half load
Output voltage: Nominal 120VAC
Waveform: Stepped sine wave (simulated sine wave)
Topology: Single boost/buck line interactive, simulated sine wave
Battery Mode Voltage Regulation: Nominal ± 6% until LBW
Transfer Time: 6-10 ms
Output Frequency & Regulation: 50/60Hz ± 0.5Hz (Unless synchronized to utility)
Short Circuit Protection: Active electronic (current limit)

BATTERIES

Battery Rating: (2) 12V/7AH
Replacement: Hot swappable
Recharge Time: 8 hours to 90% after full load discharge
Battery Warranty: 2 years

SURGE PROTECTION SPECIFICATIONS

Surge Protection: Advanced Series Mode® surge elimination
Surge Energy Rating: 6,000 volts/3,000 amps
Let through Voltage (6,000 volt surge): 0 volts
UL 1449 Adjunct Classification Test Results: 1000 surges, 6000 volts, 3000 amps, B3 pulse; Measured suppressed voltage: 170 volts; no failures.
Federal Guidelines: Grade A, Class 1, Mode 1 (CID A-A-55818)
EMI/RFI Filter, Normal Mode (50-ohm load): 40 dB @ 100 kHz; 50 dB @ 300 kHz; 50 dB @ 3 MHz; 50 dB @ 30 MHz
EMI/RFI Filter, Common Mode (50-ohm load): 18 dB @ 300 kHz; 30 dB @ 1 MHz; 50 dB @ 5 MHz; 50 dB @ 20 MHz
Maximum Applied Surge Voltage: 6000 volts*
Maximum Applied Surge Current: Unlimited, due to current limiting*
Maximum Applied Surge Energy: Unlimited, due to current limiting*
Endurance (C62.41-1991 Category B3 pulses): 1kV>500,000; 3 kV>10,000; 6 kV>1000

GENERAL SPECIFICATIONS

Warranty: (USA and Canada only) 10-year limited warranty
Battery Warranty: 2 years
Monitoring Software: Includes SentryPlus software
Communications: USB
Rack Size: 2U
Unit Dimensions (H x W x D): 3.5" x 19.0" x 10.5"
Unit Weight (lbs.): 32.0 lbs.
Operating Temperature: 32°F to 104°F (up to 5,000 ft above sea level (0°C to +40°C (up to 1,500 meters above sea level)
Operating Elevation: 32°F to 95°F (5,001-10,000 ft above sea level (0°C to +35°C (1,501 to 3,000 meters above sea level)
Storage Temperature/Relative Humidity: 5°F to 113°F (-15°C to +45°C) / 0 - 95% non-condensing
Humidity Range: 5% to 95% R.H., non-condensing

* 1.2 x 50 μs pulse, industry standard combination wave surge, as per IEEE C62.41.

** Specifications subject to change without notice.